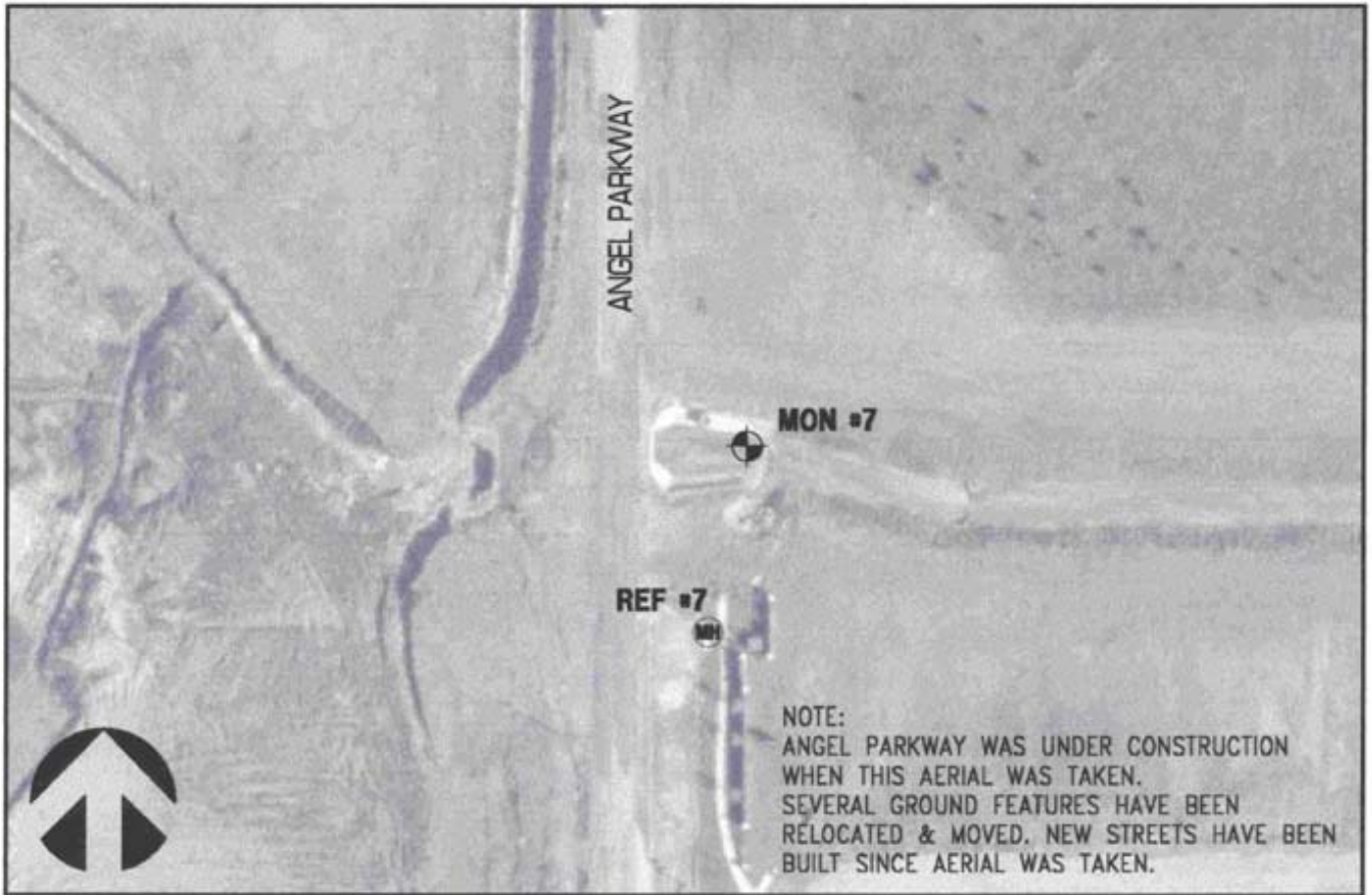




CITY OF ALLEN
GEODETIC MONUMENTATION



SCALE 1"=100'

(AERIAL PROVIDED BY THE CITY OF ALLEN, 2001 AERIAL PHOTO)

COORDINATE SYSTEM: TEXAS NORTH CENTRAL (ZONE 4202)

MONUMENT NO. 7

STATION DESCRIPTION:

3-1/2" ALUMINUM DISK SET IN TOP OF HEADWALL, LOCATED 106'± SOUTH OF THE INTERSECTION OF COUNTRYBROOK LANE AND ANGEL PARKWAY ON THE EAST SIDE OF ANGEL PARKWAY.

Datum: NAD83 / NAVD88				
NORTHING	7096359.91200	ft.	2162974.8271	m.
EASTING	2541437.08600	ft.	774631.5732	m.
ELEVATION	637.04		194.17	

Datum: NAD27 / NGVD29				
NORTHING	530637.24507	ft.	161738.5574	m.
EASTING	2266911.57567	ft.	690956.0370	m.
ELEVATION	637.08		194.18	

LATITUDE	33°07'23.01961"N
LONGITUDE	96°37'43.97793"W

REFERENCE NO. 7

STATION DESCRIPTION:

CENTER OF MANHOLE LID ON STORM CURB INLET, LOCATED 202'± SOUTH OF THE INTERSECTION OF COUNTRYBROOK LANE AND ANGEL PARKWAY OF THE EAST SIDE OF ANGEL PARKWAY.

Datum: NAD83 / NAVD88				
NORTHING	7096263.78600	ft.	2162945.5278	m.
EASTING	2541417.22800	ft.	774625.5204	m.
ELEVATION	640.22		195.14	

Datum: NAD27 / NGVD29				
NORTHING	530541.31300	ft.	161709.3173	m.
EASTING	2266890.80495	ft.	690949.7060	m.
ELEVATION	640.26		195.15	

LATITUDE	33°07'22.06865"N
LONGITUDE	96°37'44.21196"W