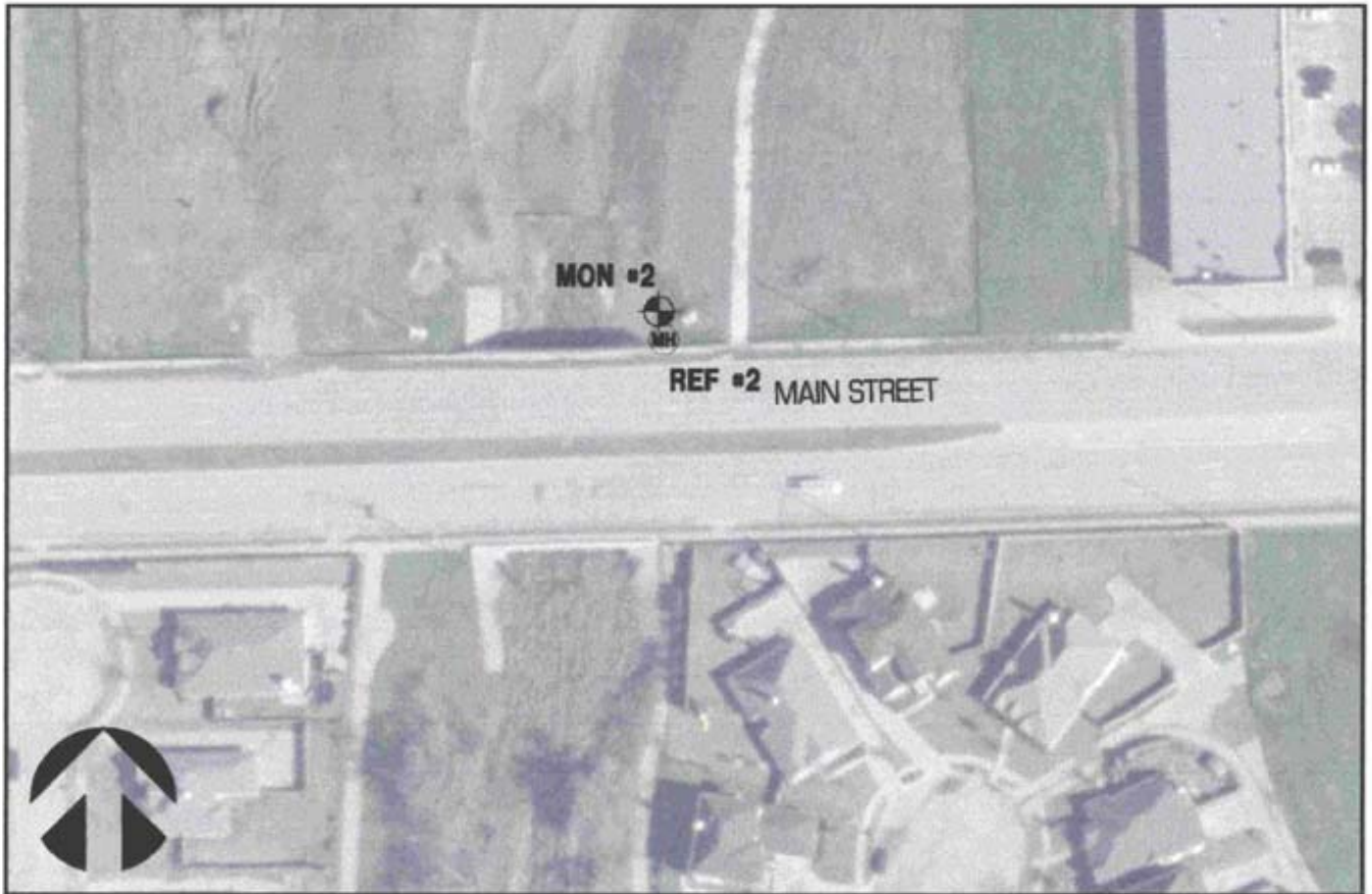




CITY OF ALLEN  
 GEODETIC MONUMENTATION



SCALE 1"=100'

(AERIAL PROVIDED BY THE CITY OF ALLEN, 2001 AERIAL PHOTO)

**COORDINATE SYSTEM: TEXAS NORTH CENTRAL (ZONE 4202)**

MONUMENT NO. 2

STATION DESCRIPTION:

3-1/2" ALUMINUM DISK SET IN CONCRETE, LOCATED 350'± FROM THE INTERSECTION OF MAIN STREET AND RICHARDSON COURT, 16'± FROM THE NORTHEAST CORNER OF A BRIDGE.

	Datum: NAD83 / NAVD88			
NORTHING	7088310.65300	ft.	2160521.4081	m.
EASTING	2537334.57800	ft.	773381.1262	m.
ELEVATION	647.13		197.24	

	Datum: NAD27 / NGVD29			
NORTHING	522627.42474	ft.	159297.1593	m.
EASTING	2262732.79698	ft.	689682.3426	m.
ELEVATION	647.16		197.25	

LATITUDE	33°06'03.39859"N
LONGITUDE	96°38'32.24691"W

REFERENCE NO. 2

STATION DESCRIPTION:

CENTER OF SANITARY SEWER MANHOLE LID, LOCATED 6'± FROM NORTHEAST CORNER OF BRIDGE.

	Datum: NAD83 / NAVD88			
NORTHING	7088296.09600	ft.	2160516.9711	m.
EASTING	2537337.16700	ft.	773381.9153	m.
ELEVATION	647.33		197.31	

	Datum: NAD27 / NGVD29			
NORTHING	522612.84389	ft.	159292.7150	m.
EASTING	2262735.24741	ft.	689683.0897	m.
ELEVATION	647.36		197.31	

LATITUDE	33°06'03.25456"N
LONGITUDE	96°38'32.21654"W